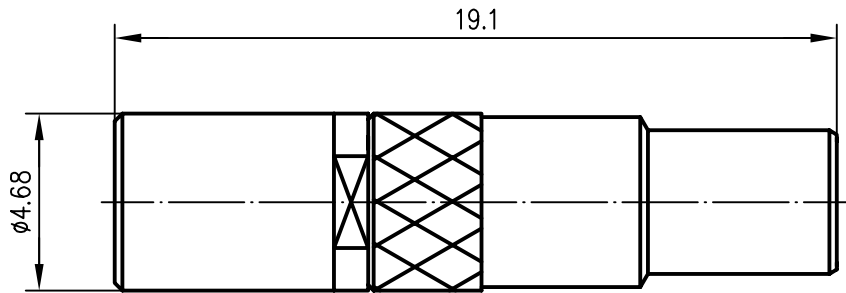


Anschlußmaße nach IEC 169-19 / mating face according to IEC 169-19




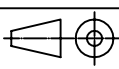
Außenleiter / outer conductor	CuBe2	Cu1Ni2Au0.8
Innenleiter / inner conductor	CuBe2	Cu1Ni2Au1.27
Isolierung / insulator	PTFE	
Crimpröhr / crimp ferrule	CuZn38Pb1.5	Cu2Ni5Au0.2
sonstige Metallteile / other metal parts	CuZn39Pb3	Cu2Ni5Au0.2

(a)	Frequenz / frequency	typ. VSWR	max. VSWR
	1 GHz	1.07	1.09
	2 GHz	1.15	1.22
	3 GHz	1.39	1.43

Einfügedämpfung / insertion loss < 0.1 dB bis/up to 3 GHz

für Kabel / for cable G 7: KX 22A; KX 3B; RG-174/U; RG-188A/U; RG-316/U

Montage / mounting C2403

a	11311	08.03.00	HR	2000	Datum/date	Name/name	Werkstoff/ material
				gez./drawn	07.02.	HR	
				gepr./appr.	07.02.00	BJ	Oberfläche/ finish
				Norm/stand.			
				Maßstab/scale	Benennung/title		
				5:1	SSMB-Kabelbuchse SSMB Straight Jack		
				untol. Maße/ dim. without tolerances according to	Untert./doc.type	Zeichnungsnr./drawing no.	 Maße/dimensions: mm
				K	J01191A0021		
				Ersatz für/ replaces			Original: DIN A4